



## Ancestral Homeplace

Phillips • Abercrombie • Jarrard



13175 Hutcheson Ferry Road, Palmetto, GA is the Ancestral Homeplace of Levi Phillips, Maurice & Berma Abercrombie, and Buddy & Ginny Jarrard

### Succession of Landowners

1. Levi Phillips purchased the land in 1828 and lived there with his second wife Elizabeth Gilbert.
2. Delila Phillips, daughter of Levi and Elizabeth, married William Hines.
3. Willie Hines Sewell, daughter of Delila and William, lived there and sold the homeplace to Maurice C. Abercrombie, a relative, in 1941.
4. Maurice and wife Berma lived there until their deaths: Maurice died in 1990; Berma in 1996; at which time Buddy Jarrard, Berma's nephew, inherited the property.
5. Buddy and Ginny Jarrard are the current property owners.

---

Buddy Jarrard provided the source for this history from family photos, letters, deeds, and articles. Laurie Searle compiled the information for a historic display on 6/21/08.

## About the Three Families

### Levi and Elizabeth Phillips

The land was acquired by Levi Phillips through the Coweta County Land Lottery of 1827 and an additional land purchase in 1833. Levi built his first dwelling near Phillips Ferry Road and operated Phillips Ferry across the Chattahoochee River. He later built a one-room structure in 1840, which is now the kitchen of the Ancestral Homeplace. Levi died in 1852 and was buried in a small family cemetery close to the first dwelling. His second wife Elizabeth, daughter Delia Phillips, and grand daughter Willie Hines Sewell, lived in the Ancestral Homeplace.

### Maurice and Berma Abercrombie

The Ancestral Homeplace was purchased from Willie Hines Sewell in 1941 by Maurice Abercrombie (great, great grandson of Levi Phillips) and his wife Berma. Maurice operated Bittersweet Farms where he raised Black Angus cows, Rhode Island Red chickens, and various crops. Berma raised more than 350 varieties of beautiful daffodils and other flowers in her gardens. Maurice and Berma lived there until their deaths: Maurice died in 1990; Berma died in 1996.

### Lamar “Buddy” & Ginny Jarrard

Lamar “Buddy” Jarrard inherited the Ancestral Homeplace from his aunt Berma Abercrombie in 1996. Buddy and his wife Ginny lovingly care for their historic home, which still has most of its original heart pine paneling, as well as various pieces of furniture, accessories, and tools from the past. In 1999, the Jarrard home, barn, and yard were the setting for several scenes in the movie “Remember the Titans.”

## Piecing Together the Past

*Much of history is pieced together from land deeds, wills, family letters, and other documents. The following notes are from Margaret Perryman.*

Phillips Ferry was in land lot 163, district 8 (163/8/Coweta), original Coweta on the eastern side. The western landing was in land lot 59, district 3, original Carroll.

Land lot 163/8/Coweta was purchased from the state (all fractional land lots were bought and most were paid for on the installment plan) by Levi Phillips on December 25, 1828. It was granted to him on October 2, 1848.

Land lot 59/3/Carroll was purchased by James N. Wright on December 21, 1828. On January 24, 1829 he sold his interest in it to Levi Phillips. It was granted to Phillips on the same days as 163 above, October 2, 1848. While these people were paying for these fractions, it was their land and they could live on it or do with it as they pleased, even before it was granted to them.

From Campbell County Will Book A, page 86, will of Levi Phillips, filed on January 24, 1852. "...to wife Elizabeth all of the location which I now live on, No. 163, 97 acres..."

The above land was deeded to Elizabeth Phillips on September 20, 1856, (Campbell County Will Book F-411). She owned this land at least as late as 1881, as she was paying tax on it. James Hutcheson never owned 163/8.

When James Hutcheson died about 1859 (or prior to that time), he owned the western land site, 59/3, but I have not found a deed to him. This was bought from the estate by Joseph Hutcheson January 22, 1867.

Maps of the Civil War (1864) period all show the ferry as "Phillips." One shows what is now known as Hutcheson Ferry Road, as "Phillips Ferry Road." The lower road from Palmetto to (what is now) Roscoe shows as "Lower Phillips Ferry Road." Also shows a "Phillips" living between County Line P.O. and the river. Also shows a "Hutcheson" living nearby.

I have one early reference to James Hutcheson living in the area. This is a deed whereby Levi Phillips bought the western part of land lot 158/8 on the east side of the Chattahoochee River, April 23, 1833. This deed says James Hutcheson owns the east part of this land lot.

---

Buddy Jarrard provided the source for this history from family photos, letters, deeds, and articles. Laurie Searle compiled the information for a historic display on 6/21/08.

## Georgia's Land Lottery

*Source: <http://ngeorgia.com/history/lotteries.htm>*

Seven times between 1805 and 1832 Georgia used a lottery system to distribute the land taken from the Cherokee or Creek Indians. These lotteries were unique to the state; no other state used a lottery system to distribute land.

Lot size varied widely, even in the individual lotteries. The largest lots distributed were 490 acres in the 1805 and the 1820 land lottery. The smallest lots were the 40-acre gold lots distributed during the Gold Lottery of 1832. Almost 3/4 of the land in present-day Georgia was distributed under this lottery system.

During the 27 years that land was distributed under the system the rules and the methods of the lottery remained virtually unchanged. Applicants could be white males over 18 (or 21 depending on the lottery), orphans, or widows. Fees depended on the lottery and the size of the lot won, but in general they only covered the cost of running the lottery. For each person subscribing to a lottery a ticket was placed in the barrel. Since each lottery was over-subscribed, blank tickets were added to compensate for the over-subscription.



George Parrish, Jr. Georgia Archives

### Georgia's Land Lotteries

- |  |   |
|--|---|
| <ul style="list-style-type: none"> <li>● <b>1805 Land Lottery</b><br/>Encompassed Creek lands just west of the Oconee River and a small strip of land in the southeast section of the state.</li> <li>● <b>1807 Land Lottery</b><br/>Included additional Creek lands.</li> <li>● <b>1820 Land Lottery</b><br/>After the Creek War (1814), Andrew Jackson demanded the secession of the southern third of present-day Georgia. A second section of land in northeast Georgia was included. This defined the eastern end of the Cherokee Nation for 12 years.</li> </ul> | <ul style="list-style-type: none"> <li>● <b>1821 Land Lottery</b><br/>Further Creek cessions</li> <li>● <b>1827 Land Lottery</b><br/>Signaled the end of the Creek Indians in Georgia.</li> <li>● <b>1832 Land Lottery</b><br/>This lottery, along with the 1832 Gold Lottery, gave the Cherokee Nation to Georgia settlers. Sparked the "Trail of Tears."</li> <li>● <b>1832 Gold Lottery</b><br/>By the time of the gold lottery Georgia's Gold Rush was winding down. The state did not guarantee that gold existed on the lot.</li> </ul> |
|--|---|

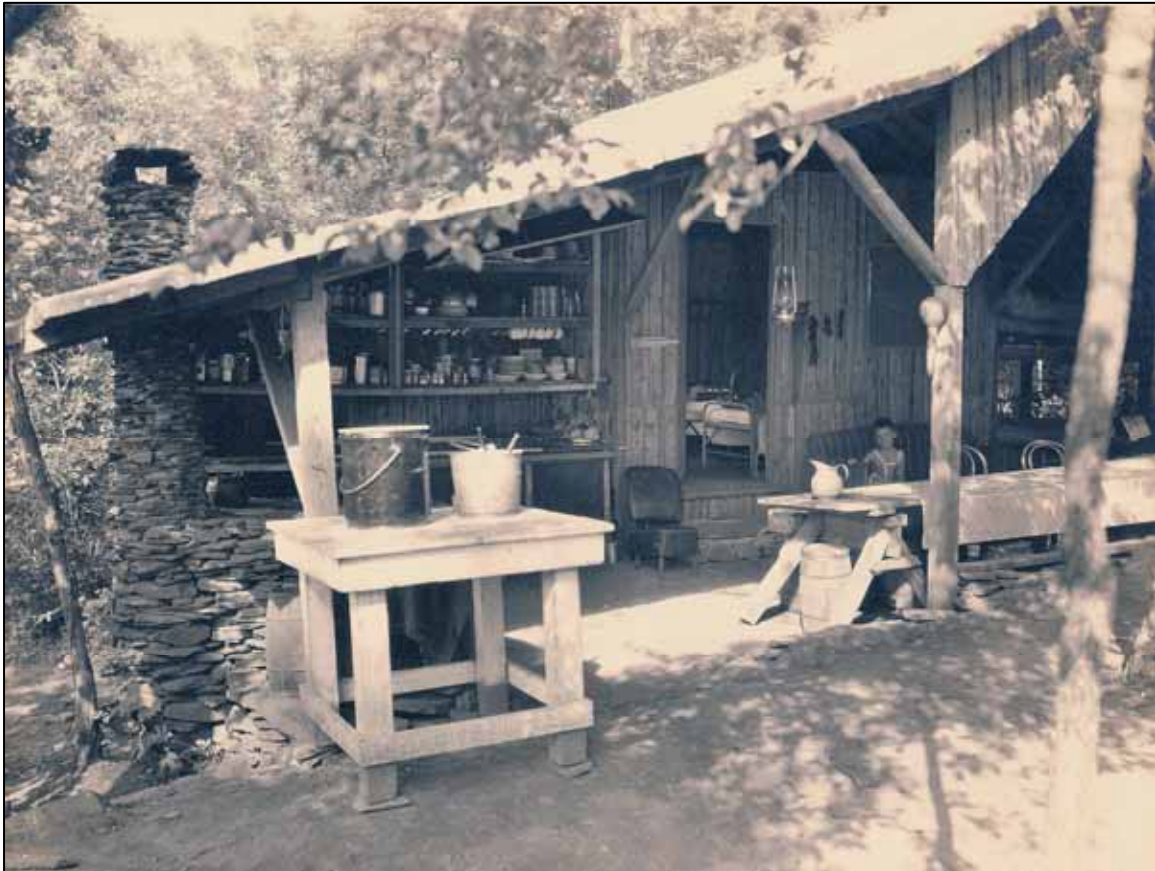


## Maurice & Berma Abercrombie Circa 1950



Berma and Maurice in the flower garden around their home on Hutcheson Ferry Road leading to the Chattahoochee River. This is the Ancestral Homeplace of Levi Phillips; great, great grandfather of Maurice. Tenant house and barns in the background are now gone.

## Abercrombie Weekend Cabin



The Abercrombie Weekend cabin was a favorite spot for friends and family. It was located on the Homeplace property down by the Chattahoochee River. This photo shows the stacked rock stove.

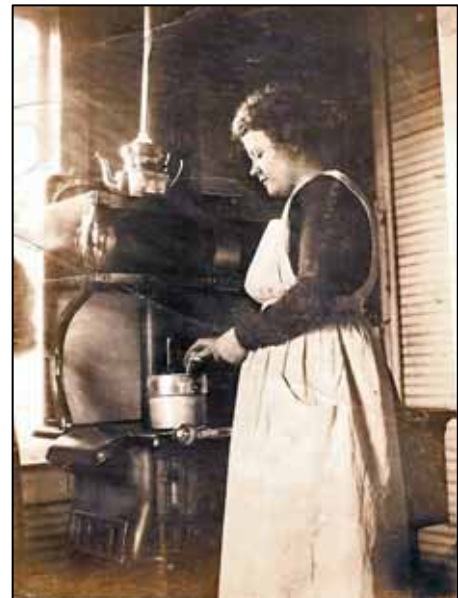
## Hutcheson Ferry 1916



Levi Phillips owned and operated the ferry across the Chattahoochee River until his death. The Ferry was renamed Hutcheson Ferry after the Civil War, and continued to operate until the mid 1950s.

## Abercrombie Album

Maurice farmed the land and raised a variety of livestock. The photos below illustrate what Chattahoochee Hills looked like without its dense tree cover. Berma was a horticulturalist and planted a large variety of flowers on the Homeplace.



## Buddy and Ginny Jarrard Album

Buddy and Ginny Jarrard were married in the gazebo at the Homeplace on June 24, 2000.



Ginny tends the beautiful flowers and Buddy tends the many historic structures on the Homeplace.

---

Buddy Jarrard provided the source for this history from family photos, letters, deeds, and articles. Laurie Searle compiled the information for a historic display on 6/21/08.

## Piecing Together the Past: A Partial Lineage

